



Media contact:
Alice Landers,
communications representative
Phone: 785.575.8113 (work)
785.224.4088 (cell)
alice.landars@westarenergy.com

****PHOTO OPPORTUNITY****

**WESTAR ENERGY'S GREEN TEAM HELPS SET UP
FOR SYMPHONY IN THE FLINT HILLS**

Media invited to photograph activity on June 10, 10 a.m. - 3 p.m.

TOPEKA, Kan., June 7, 2010 — More than 50 Westar Energy Green Team volunteers will help set up on June 9, 10 and 11 for the fifth annual Symphony in the Flint Hills scheduled for 6:45 p.m., Saturday, June 12 at the South Clements Pasture southwest of Cottonwood Falls.

Symphony in the Flint Hills invites the audience to enjoy the music of the Kansas City Symphony while heightening awareness of and appreciation for the beauty of the tallgrass prairie in the Kansas Flint Hills. About 7,000 usually attend the annual concert, and tickets typically sell out within minutes of going on sale.

Westar Energy is one of the 2010 symphony sponsors. This is the fifth consecutive year the Green Team has helped with symphony setup. Green Team volunteers are the only workers involved in setup. Symphony volunteers handle the take-down.

Mike Nolan, Green Team coordinator, said the Green Team is involved because it shows Westar's commitment to preserve the prairie. "The Flint Hills are an environmental jewel, and the Symphony in the Flint Hills is an excellent means of showing people from the city, who come out in large numbers, the beauty of the prairie. At this time of year, the wildflowers are in full bloom, and it's an awesome sight," said Nolan.

Requiring three days of eight-hours-a-day work by these dedicated volunteers, preparing for the symphony involves placing 2,000 hay bales for tent seating; installing several hundred

Westar Energy Green Team helps set up for Symphony in the Flint Hills

t-posts to which to attach a snow fence; assembling programs and decorations in an office in Strong City; installing pylons to which decorative ribbons will be tied; placing tables and chairs in tents and stapling tablecloths to tables; power-washing 800 plastic chairs; laying out a parking area in 60-ft. increments, which will involve mowing strips of grass for designated parking spaces; gathering eight barbed-wire fence balls for decoration; collecting and bringing to the area donated trailers to transport concert-goers to the site from the park 'n ride tent; clearing brush along the parking area's fence line; hauling and placing trash and recycling containers; installing brackets for LED lantern poles lighting the pathway to the tent area; and assembling a 60 x 60-ft. dance floor from pieces.

“This is one of our largest work projects each year, requiring more than 500 total volunteer hours,” said Nolan. “It’s very rewarding to complete all the behind-the-scenes work for this event to be successful each year. We’ve never invited the media to cover the advance preparation before, and we’re pleased to offer them this rare opportunity to give Kansas audiences a sneak peek at what it takes to get ready for one of the most unique and memorable concerts in Kansas.”

If media is unable to attend June 10 setup, Westar Energy can provide B-roll of setup activities. Contact Alice Landers, 785.575.8113 (work) or 785.224.4088 (cell), or alice.landlers@westarenergy.com, to request a DVD. Photographs also can be sent.

To reach South Clements Pasture, go seven miles south of Cottonwood Falls on National Scenic Byway Kansas Highway 177, turn west at the historic Bazaar School House. Continue west on county road eight miles to concert site.

The Westar Energy Green Team is a group of employee and retiree volunteers that takes on environmental projects across Kansas. Since 1989, the team has planted tens of thousands of trees in towns, built wetlands, restored prairie by planting native grasses and forbs, removed

Westar Energy Green Team helps set up for Symphony in the Flint Hills

invasive trees, partnered on environmental education publications and built trails, bridges, boat ramps, and look-outs to enhance access and educational opportunities. Completing 50 to 70 projects per year, the Green Team collaborates with conservation groups, agencies and schools and is always looking for new opportunities to enhance the Kansas environment and foster understanding of it.

-30-

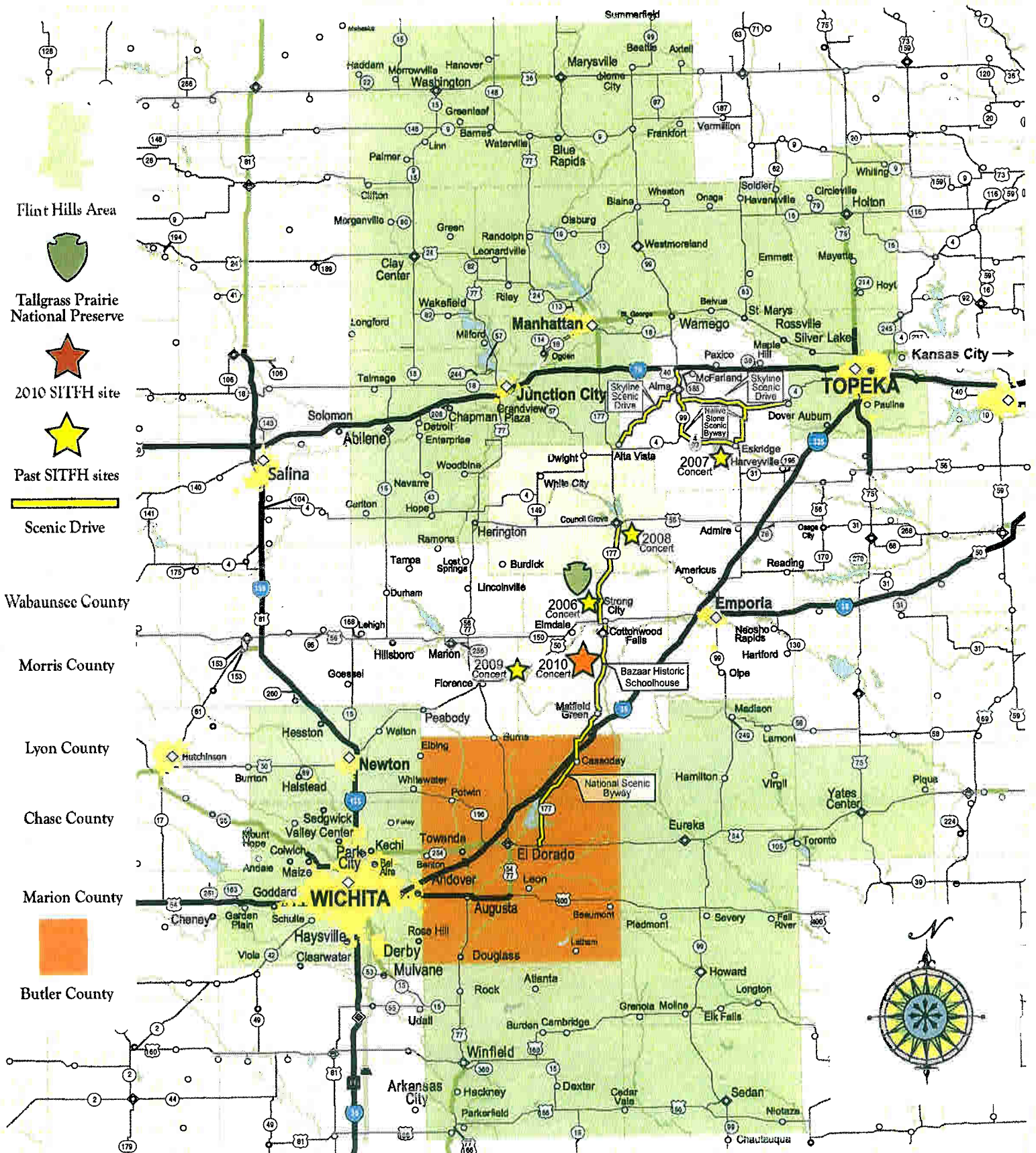
Westar Energy, Inc. (NYSE: WR) is the largest electric utility in Kansas, providing electric service to about 684,000 customers in the state. Westar Energy has about 7,100 megawatts of electric generation capacity and operates and coordinates more than 35,000 miles of electric distribution and transmission lines.

For more information about Westar Energy, visit us on the Internet at <http://www.WestarEnergy.com>

For more information on the symphony, visit <http://www.symphonyintheflinthills.org/>

SYMPHONY IN THE FLINT HILLS

2010 Area Guide



SYMPHONY IN THE FLINT HILLS

Fifth Anniversary

Schedule of Activities – Saturday, June 12, 2010

– Before the Concert –

1:00 pm Ticket gate opens
Rides to concert site begin from Wait and Ride Tent
Wildflower walking trail to concert site opens. Barbeque and beverages served in the Food Tent and Beverage Tent until 11 pm

1:00 till Concert Intermission

Symphony in the Flint Hills Silent Art Auction
A juried selection of paintings inspired by the Flint Hills will be offered by silent auction in the Art and Silent Auction Tent. One painting is chosen for the 2010 limited edition fine art print.

1:00 – 6:00 Horse-drawn covered wagon rides

3:00, 4:00, & 5:00 Ranch horse demonstration, Rex Buchman

1:00 – 6:30 Kansas City Symphony Instrument Petting Zoo

1:00 – 6:00 Prairie Walks and Interpretation

Learn about native grasses, wildflowers, birds and other wildlife, habitats, geologic formations, and cattle grazing on the tallgrass prairie from Kansas Native Plant Society, Audubon of Kansas, Kansas for Agriculture in the Classroom, and Kansas Grasslands Water Quality Project.

2:00 – 6:00 Presentations In History And Heritage Tents
(see following page)

1:30 – 4:30 Solar Telescopes At Hillside Observatory

1:30 Galileo Galilei – 400 Years of Astronomy
& Solar System Walk

2:15 Shadows and Silhouettes &
Planetary Motions

3:00 Phases of the Moon & Galileo Galilei –
400 Years of Astronomy

3:45 Solar System Walk & Shadows
and Silhouettes

4:30 Planetary Motions
& Phases of the Moon

– Concert –

6:45 – 8:50 Welcome followed by 90 minute performance by Kansas City Symphony—plus 20 minute intermission.

During intermission, food and beverages will be available in the Food Tent and Beverage Tent. The Flint Hills Store Tent and the Art and Silent Auction Tent will be open; silent auction closes at the end of intermission.

– After the Concert –

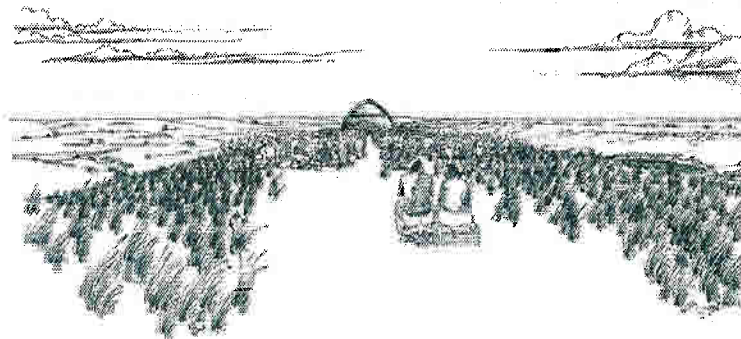
9:15 – 11:30 Dancing to traditional western acoustic band.
Food and beverages continue to be served in the Food Tent and Beverage Tent until 11:00pm.

Story Circle—Jeff Davidson sings and tells cowboy tales, Annie Wilson sings original Flint Hills music, and Geff Dawson performs cowboy poetry

9:00 till deep dark Stargazing through telescopes at the Hillside Observatory. Hosted by Kansas Astronomical Observers and the Salina Astronomy Club

The walking trail and parking lot will be illuminated as darkness falls. However, the path of the Wildflower Trail is uneven ground. Shadows can be deceiving. Be particularly careful moving through the terrain.

Exiting the parking lot is expected to take some time, given many cars on narrow country roads. You may wish to extend your day and enjoy a prairie evening and the after-concert activities.



Schedule of Presentations in — History and Heritage Tents —

Ranching on the Tallgrass Prairie

Sunflower Tent *Flint Hills Natural History*

- 2:00-2:20 Birds of the Prairie: Prairie Chickens
—Ron Klataske
- 2:30-2:50 Ponds, Springs, Rivers, and Ranching—Rex Buchanan
- 3:00-3:20 Managing Grass for Ranching—Clenton Owensby
- 3:30-3:50 Conservation Easements: Preserving the Prairie—
Rancher Bill Haw with Brian Obermeyer, TNC
- 4:00-4:20 Prairie Wildflowers—Dee & Phyllis Scherich
- 4:30-4:50 Birds of the Prairie: Prairie Chickens—Ron Klataske
- 5:00-5:20 Environmental Change and the Peopling of the Flint
Hills After the Ice Age—Rolfe Mandel
- 5:30-5:50 Ponds, Springs, Rivers, and Ranching—Rex Buchanan

Blue WildIndigo Tent *Stories from the Site*

- 2:00-2:20 Railroads and Ranching—Phil Miller
- 2:30-2:50 Pioneer Bluffs Ranch, est. 1859—Marva Weigelt
- 3:00-3:20 The South Clements Pasture—Ed Bass and Bill Haw
- 3:30-3:50 Ranch Horses of the Flint Hills—Frank Buchman
- 4:00-4:20 Railroads and Ranching—Phil Miller
- 4:30-4:50 Pioneer Bluffs Ranch, est. 1859—Marva Weigelt
- 5:00-5:20 Texas-to-Kansas Cattle Trails—Jim Hoy
- 5:30-5:50 Ranch Rodeo in the Flint Hills—Panel from
Buck Creek Ranch & Lonesome Pine Ranch:
Randy Peterson, Bud Higgs, Adrian Vogel,
Grady Gibb. *Earl Kuhn, WRCA, Moderator*

Butterfly Milkweed Tent *Ranching in the Flint Hills*

- 2:00-2:20 The South Clements Pasture—Ed Bass and Bill Haw
- 2:30-2:50 Texas-to-Kansas Cattle Trails—Jim Hoy
- 3:00-3:50 Some Cowboys Are Girls
—Women ranchers/cowgirls: Arlene Bailey,
Leighann Crowfoot, Bobbi Hammond,
& Pat Potts. *Mike Beam, Moderator*
- 4:00-4:20 Conservation Easements: Preserving the Prairie—
Paul & Jackie Seeley, Flint Hills ranchers and
Brian Obermeyer, TNC
- 4:30-4:50 Ranch Horses of the Flint Hills—Frank Buchman
- 5:00-5:50 Flint Hills Ranchers—Panel: Tom Burton,
Pat Sauble, Cliff Cole, Joe Mushrush. *Dee Likes,
KLA, Moderator*

Purple Coneflower Tent *Prairie as Muse*

- 2:00-2:20 History of Cowboy Music—Kelly Werts

- 2:30-2:50 Prairie from a Plein Air Perspective—Lisa Grossman
- 3:00-3:20 Poetry Inspired by Place—Steven Hind,
Caryn Miriam-Goldberg, H.C. Palmer.
- 3:30-3:50 History of Cowboy Music—Kelly Werts
- 4:00-4:20 William Stafford: Poetic Voice of Kansas—
Steven Hind, Denise Low, William Sheldon
- 4:30-4:50 Prairie from a Plein Air Perspective—Lisa Grossman
- 5:00-5:50 Makers of Custom Cowboy Gear—Panel:
Jack Kellogg, Matt Hunn, Bruce Brock,
Jay Adcock. *Richard Keller, Moderator*

All topics and presenters are subject to change without notice.

— Concert Day Activities —

6:01 Sunrise

1:00 Ticket Gate opens

6:45 Concert begins

8:49 Sunset

Dancing

Story Circle

Star Gazing